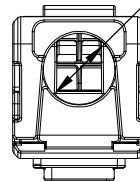
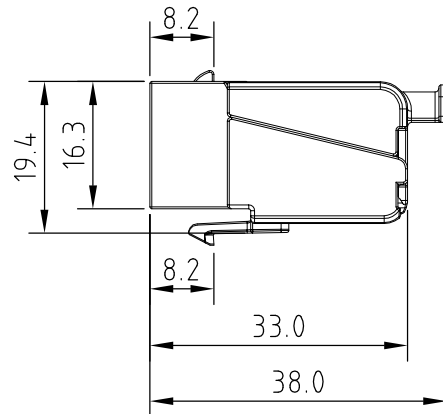
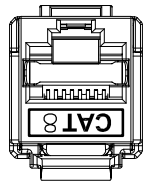
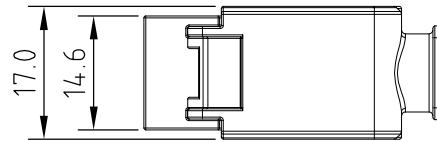
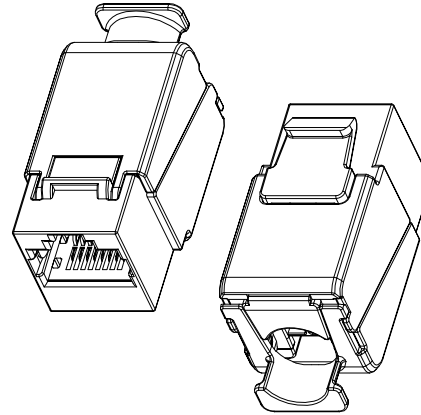


4

3

2

1



#### TRANSMISSION PERFORMANCE

When used with R1001B-I8CM1 and specified cables, meet all requirements specified in channel

requirement of:  
ISO/IEC 11801-1, Class I  
ANSI/TIA-568-C.2-1, Category 8 (30M)

#### ELECTRICAL

Electrical Insulation Resistance : 500 M  $\Omega$   
min. @ 100V d.c  
Dielectric Withstanding Voltage : 1000V d.c. or  
a.c. Peak Contact to Contact @ 60Hz for 1  
minute. 1500V d.c. or a.c. Peak Contact to  
Test panel @ 60Hz for 1 minute.

#### MECHANICAL

Insertion / Extraction Life : 750 Cycles Minimum  
IDC Wire Gauge : 22 ~ 26 AWG.  
This product works with 26 AWG, but cannot have been  
previously used with any other wire gauge if being used  
with 26 AWG.

#### PHYSICAL

Housing : Zinc-alloy fully shielded.  
Spring Wire : Phosphor Bronze Alloy Plated With  
50 micro-inch of Gold  
IDC : Phosphor Bronze Alloy With 100  
micro-inch 100% Sn.

UNLESS OTHERWISE SPECIFIED: TOLERANCES			PROJECT ID					
INCH	MM	ANGULAR	FILE	DATE	TITLE			
.X $\pm$ .016	.X $\pm$ 0.2	X $\pm$ 1°						
.XX $\pm$ .008	.XX $\pm$ 0.1	.X $\pm$ .5°						
.XXX $\pm$ .004								
MATERIAL			DRAWN	01/15'19				
SURFACE			CHECK		SIZE	DRAWING NUMBER	PART NUMBER	REV
FINISH			APPROVED					A
					SCALE	1 : 1	UNIT	mm
							SHEET	1 OF 1